

Ceramic Low Pass Filter

50Ω

DC to 2400 MHz

LFCN-2400+ LFCN-2400



Maximum Ratings

| | |
|----------------------------|-----------------|
| Operating Temperature | -55°C to 100°C |
| Storage Temperature | -55°C to 100°C |
| RF Power Input* | 9W max. at 25°C |
| DC Current Input to Output | 1A max. at 25°C |

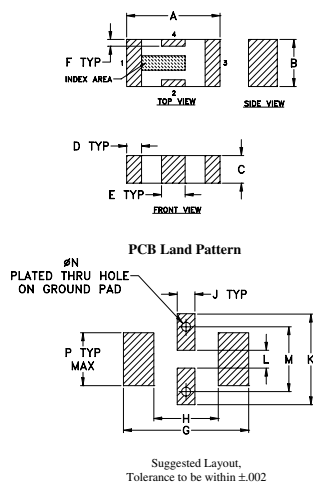
* Passband rating, derate linearly to 4W at 100°C ambient.

Pin Connections

| | |
|--------|-----|
| RF IN | 1** |
| RF OUT | 3** |
| GROUND | 2,4 |

** RF IN & RF OUT can be interchanged

Outline Drawing

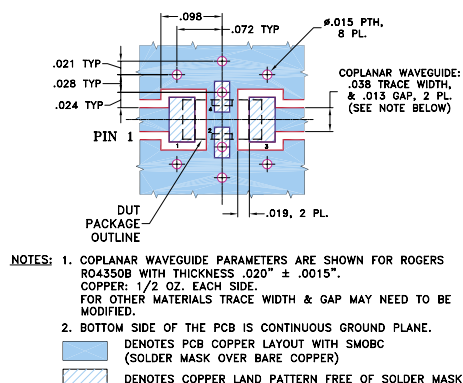


Outline Dimensions (inch)

| A | B | C | D | E | F | G |
|------|------|------|------|------|------|------|
| .126 | .063 | .037 | .020 | .032 | .009 | .169 |
| 3.20 | 1.60 | 0.94 | 0.51 | 0.81 | 0.23 | 4.29 |

| H | J | K | L | M | N | P | wt |
|------|------|------|------|------|------|------|-------|
| .087 | .024 | .122 | .024 | .087 | .012 | .071 | grams |
| 2.21 | 0.61 | 3.10 | 0.61 | 2.21 | 0.30 | 1.80 | .020 |

Demo Board MCL P/N: TB-270 Suggested PCB Layout (PL-137)



Features

- excellent power handling, 9W
- small size
- 5 sections
- temperature stable
- hermetically sealed

Applications

- harmonic rejection
- VHF/UHF transmitters/receivers
- lab use

CASE STYLE: FV1206

| Model | Price | Qty. |
|-------------|--------|---------|
| LFCN-2400+ | \$1.99 | (10-49) |
| LFCN-2400 | \$1.99 | (10-49) |
| LFCN-2400D+ | \$2.49 | (10-49) |
| LFCN-2400D | \$2.49 | (10-49) |

**+ RoHS compliant in accordance
with EU Directive (2002/95/EC)**

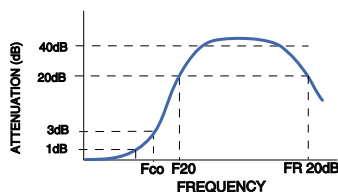
The +Suffix identifies RoHS Compliance. See our web site for RoHS Compliance methodologies and qualifications.

Electrical Specifications¹ (T_{AMB} = 25°C)

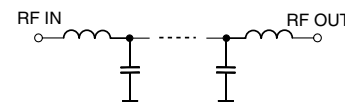
| PASSBAND (MHz) (loss < 1.5 dB) | fco, MHz Nom. (loss 3 dB) | STOP BAND (MHz) (loss, dB) | | | VSWR (:1) | | NO. OF SECTIONS |
|--------------------------------------|---------------------------------|-------------------------------|-----------|-------|--------------|----------|--------------------|
| | | F 20 | 30 | FR 20 | Stopband | Passband | |
| Max. | Typ. | Min. | Typ. | Typ. | Typ. | Typ. | |
| DC-2400 | 2800 | 3600 | 3700-4000 | 5000 | 20 | 1.2 | 5 |

1. For applications requiring DC voltage to be applied to the Input or output, use LFCN-2400D (DC Resistance to ground is 100 Mohms min.)

typical frequency response

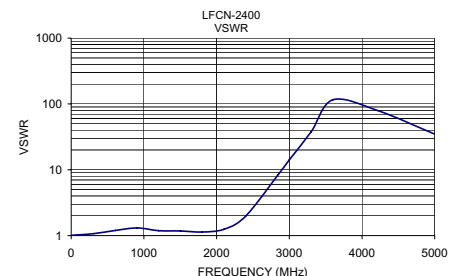
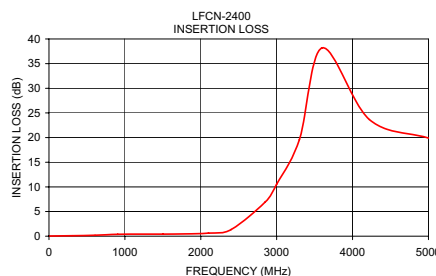


electrical schematic



Typical Performance Data at 25°C

| Frequency (MHz) | Insertion Loss (dB) | VSWR (:1) |
|--------------------|------------------------|--------------|
| 10.00 | 0.03 | 1.01 |
| 308.75 | 0.10 | 1.07 |
| 607.50 | 0.20 | 1.20 |
| 906.25 | 0.39 | 1.31 |
| 1205.00 | 0.41 | 1.19 |
| 1503.75 | 0.41 | 1.17 |
| 1802.50 | 0.46 | 1.13 |
| 2101.25 | 0.62 | 1.25 |
| 2400.00 | 1.34 | 1.97 |
| 2850.00 | 6.94 | 8.51 |
| 3000.00 | 10.53 | 14.15 |
| 3300.00 | 19.58 | 37.77 |
| 3600.00 | 38.18 | 115.81 |
| 4222.22 | 23.66 | 78.97 |
| 5000.00 | 19.90 | 34.75 |



designers kit available

| Kit No. | No. of Units in Kit | Description | Price \$ per Kit |
|------------|------------------------|--|---------------------|
| K2-LFCN | 60 | 5 of each: LFCN-800,-900,-1000,-1200,-1325,-1700,-2000,-2250,-2400,-5000,-6000,-6700 | 119.95 |

Mini-Circuits®

Distribution Centers NORTH AMERICA 800-654-7949 • 417-335-5935 • Fax 417-335-5945 • EUROPE 44-1252-832600 • Fax 44-1252-837010

Mini-Circuits ISO 9001 & ISO 14001 Certified

INTERNET <http://www.minicircuits.com>

P.O. Box 350166, Brooklyn, New York 11235-0003 (718) 934-4500 Fax (718) 332-4661



REV. H
M102713
LFCN-2400
ED-9913/5
AD/CP/AM
060912